



Brio[®]

PRISM

**Tankless 1.5:1 RO Filtration System
with Stainless Steel Faucet**

Setup Manual

Model No.: TROE600PRISM

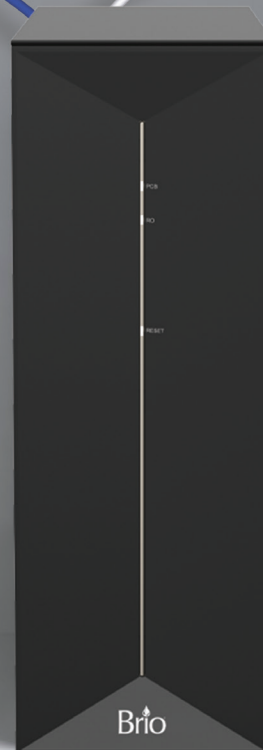


Table of Contents

Safety Information	3
Intended Use	3
Package Contents	4
Product Features	5
Indicator Panel Description	5
Specifications	6
Materials Needed	6
Installation	7
Installation Overview	7
Connect to the Cold Water Supply	7
Install the Reverse Osmosis Drain Saddle	8
Install the Faucet	10
Complete the Installation	11
Operation	11
Start Up the Filtration System	11
Start Water Purification	11
Shut Down	11
Care and Maintenance	12
Filter Replacement Schedule	12
Replacing the Filters	12
Flushing the Filters	13
Troubleshooting	13
Warranty	15

Safety Information

WARNING: To reduce risk of injury and property damage, you must read this entire manual before assembling, installing, and operating the filtration system.

- Installation needs to comply with state and local laws and regulations.
- If the power cable is damaged, do not use. Contact customer service for a replacement.
- Avoid storing in an area exposed to intense sunlight as this can cause damage to components.
- Do not store in or expose the device to temperatures lower than 32 °F (0 °C). The ideal temperature range is 39–100 °F (4–38 °C).
- Risk of electric shock. Device must be used with a GFCI outlet only.
- The device must be installed or relocated by a professional technician due to the risk of electric shock and product damage.
- The best working pressure for this device ranges from 15 to 100 PSI. Install a pressure increasing or decreasing device if the water pressure is lower or higher than this level.
- For use with municipal tap water only. Not for use with well or underground water.
- Do not place magnetic devices near the device as damage could occur.
- Do not place heavy objects on the device.
- Do not allow children near the device without adult supervision.
- Do not pull the power cord as this could cause damage. To unplug the unit, grasp the power cord by the plug and pull directly from socket.
- Do not plug in or unplug with wet hands.
- Do not place combustible substances near the device. Keep away from heat sources and open flames.
- Install this device near a floor drain.
- If the device is not going to be used for a long period of time, unplug the unit from the power source and turn off water.

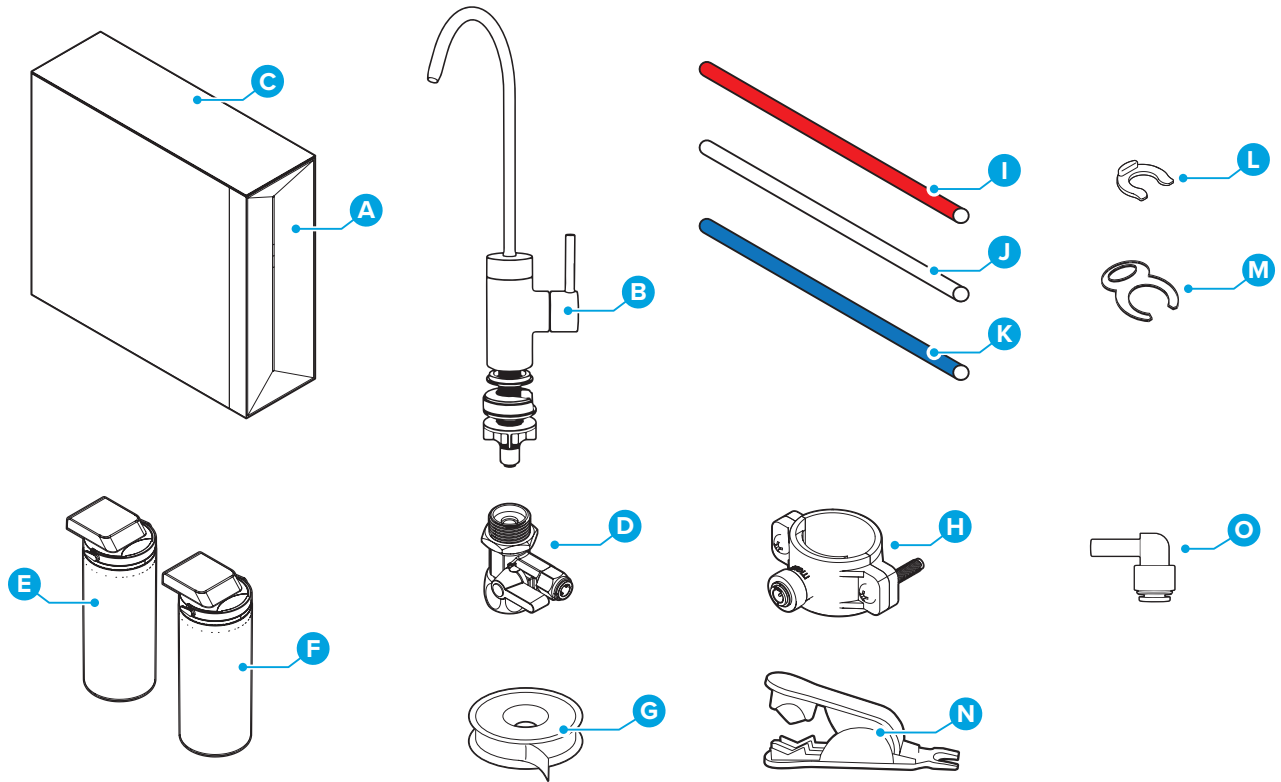
Intended Use

This filtration system is intended to be used in household and similar applications such as:

- Staff kitchen areas in shops, offices, and other working environments
- Farm houses
- Hotels, motels, and bed-and-breakfast environments
- Residential-type environments
- Catering and similar non-retail applications

This appliance is not intended for use by persons (including children) with reduced physical, sensory, or mental capabilities, or lack of experience and knowledge, unless they are given supervision or instruction concerning the use of appliance by a person responsible for their safety.

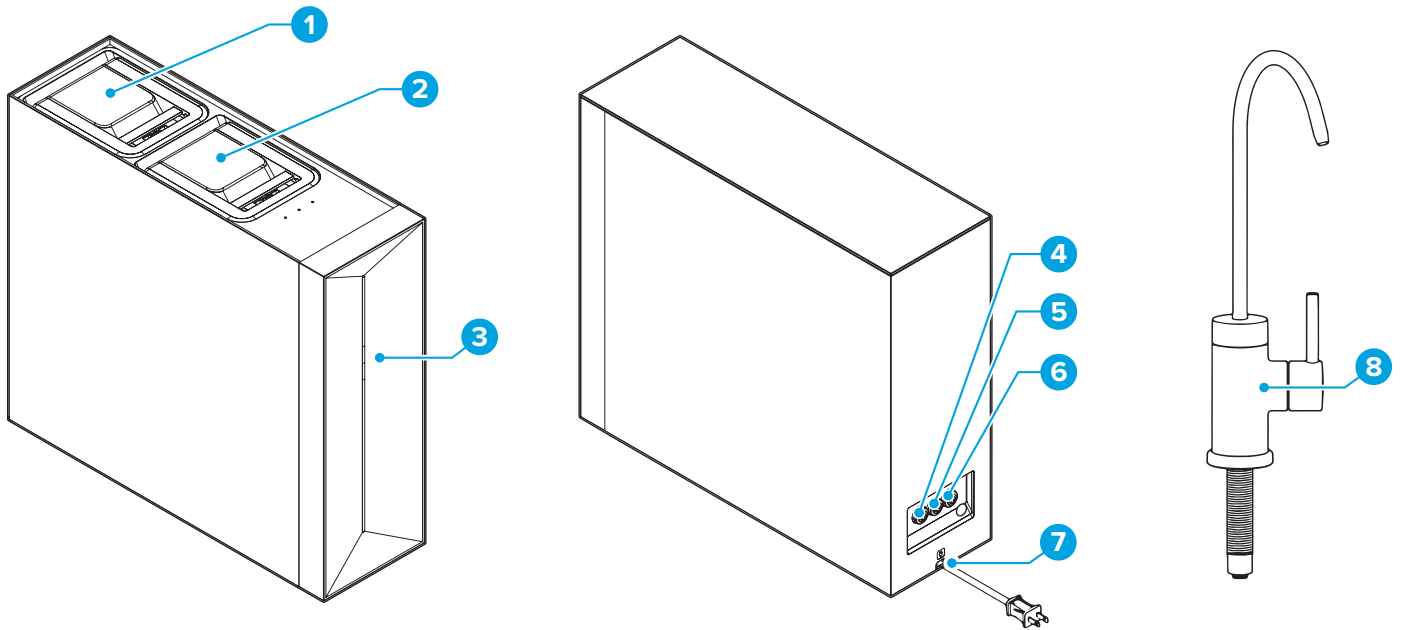
Package Contents



Part	Description	Quantity
A	RO filtration unit	1
B	Faucet with fixing components	1
C	Filter compartment cover	1
D	Feedwater adapter	1
E	PCB filter	1
F	RO filter	1
G	Plumber's tape	1
H	Drain saddle	1

Part	Description	Quantity
I	RO wastewater tube	1
J	Inlet water tube	1
K	Faucet tube	1
L	Small locking clip	8
N	Tube cutter	1
M	Large locking clip	3
O	Elbow connector	3

Product Features

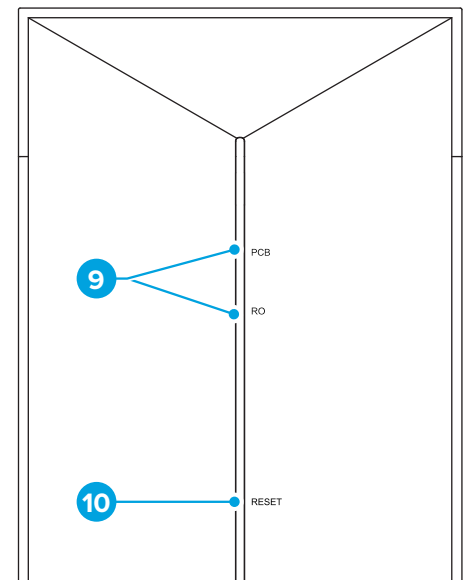


Part	Description
1	PCB filter compartment
2	RO filter compartment
3	Filter indicators
4	Inlet port

Part	Description
5	Outlet port
6	Drain port
7	Power cord
8	Filtered water faucet

Indicator Panel Description

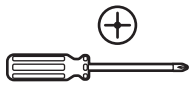
Item	Description
9	Filter indicator lights – When one or both are blinking, it's time to replace filter(s).
10	Reset button – Touch and hold for 3 seconds to reset the system after changing filters.



Specifications

Model No.	TROE600PRISM
Product Dimensions (WxHxD)	5.4 x 15.4 x 16.9 in. (13.8 x 39.0 x 43.0 cm)
Daily Production Rate	600 GPD
Purified Flow Rate	1.5 LPM
Feedwater Requirement	Municipal tap water
Feedwater Pressure	15–100 psi
Feedwater Temperature	39–100 °F (4–38 °C)
Filtration System	PCB and RO
Rated Voltage / Frequency	100–125 V / 50/60 Hz
Rated Power	85 W

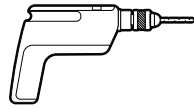
Materials Needed



Phillips-Head
Screwdriver



Adjustable Wrench



Power Drill



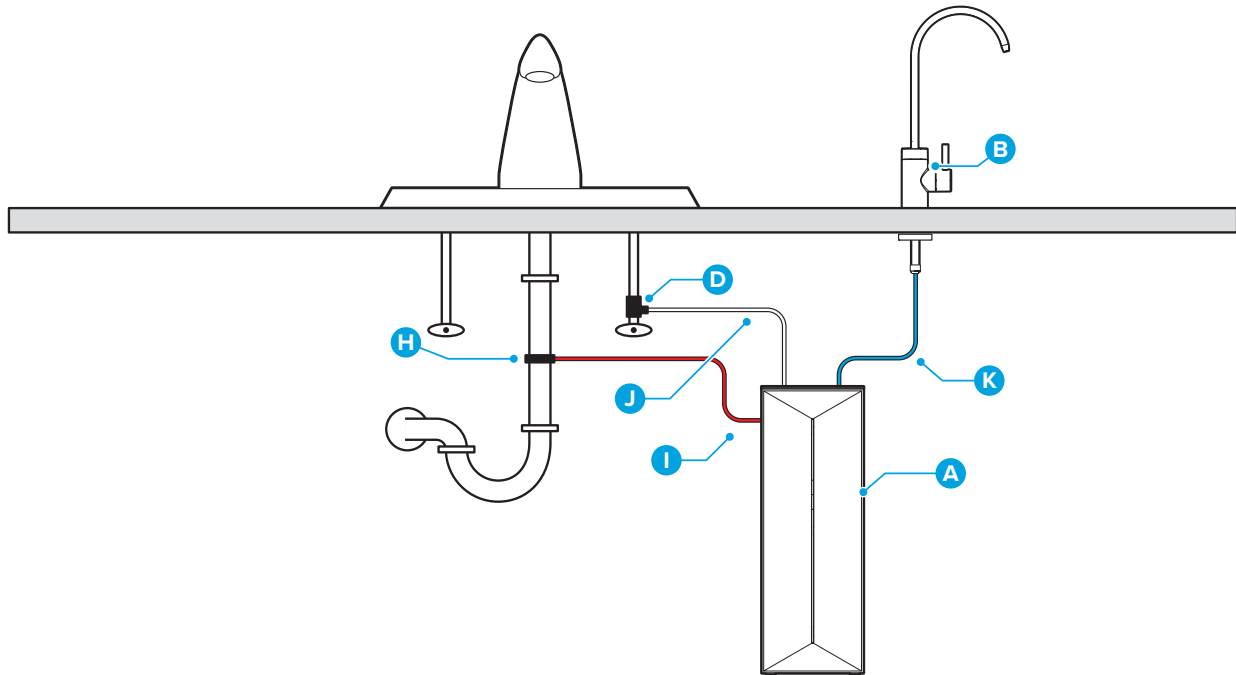
1/4" Drill Bit
(for Drain Saddle)



1" Drill Bit
(for Faucet
Mounting Hole)

Installation

Installation Overview



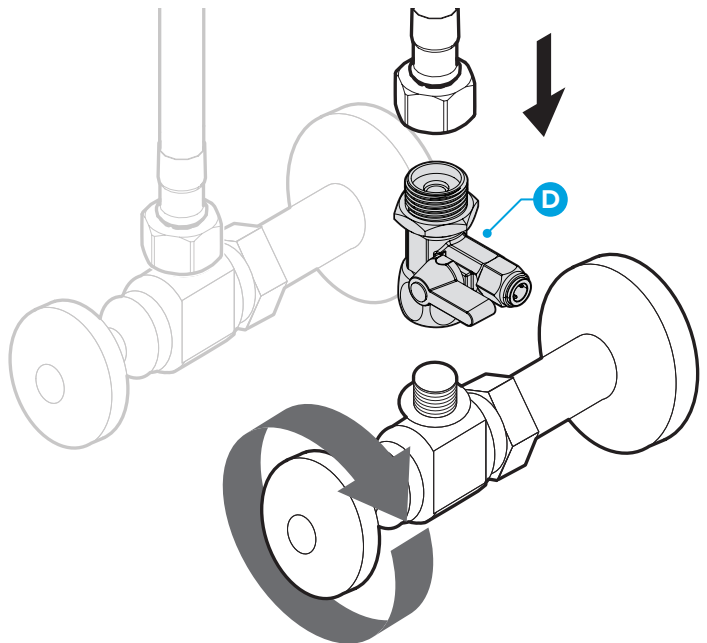
Connect to the Cold Water Supply

CAUTION: DO NOT CONNECT THIS WATER LINE TO A HOT WATER SUPPLY LINE. The water supply to the unit MUST be from the COLD WATER LINE. Using HOT WATER will severely damage your filters.

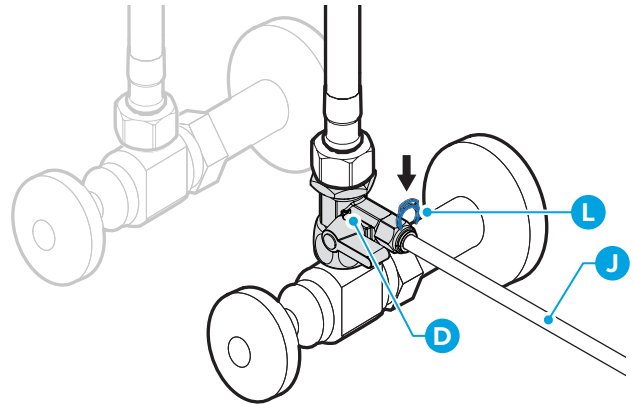
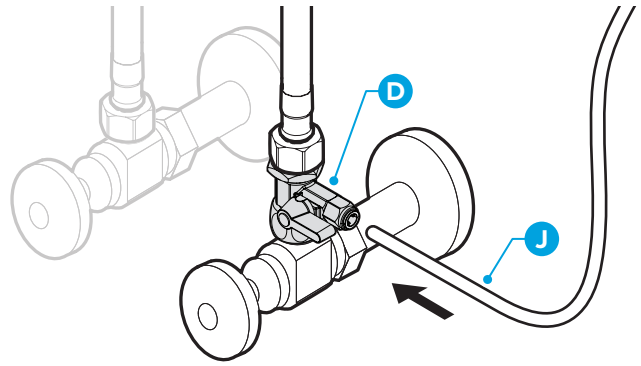
NOTE: Use included tube cutter to cut tubing to fit installation area. Use included plumber's tape on any additional threaded connections you may need to make during installation. Do not use on included feedwater adapter, as it has a built-in gasket that creates a proper seal without tape.

1. Turn off cold water supply. Open faucet and drain remaining water in cold water pipe.
2. Using an adjustable wrench, disconnect cold water pipe from cold water supply line.
3. Twist feedwater adapter (D) onto the cold water supply line valve and tighten.
4. Twist cold water pipe onto the top of the feedwater valve. Tighten the nut.

NOTE: An extra adapter nut is included on top of the feed water adapter (D) to attach to a 3/8 in. or 1/2 in. feed plumbing line.



5. Insert the white inlet water tube (J) straight into the quick connector of the feedwater adapter (D).
6. Tighten the nut on the feedwater adapter (D). Slide one of the small blue locking clips (L) between quick connector and gray collar on feedwater adapter. Tug tube gently to ensure a secure connection with feedwater adapter.

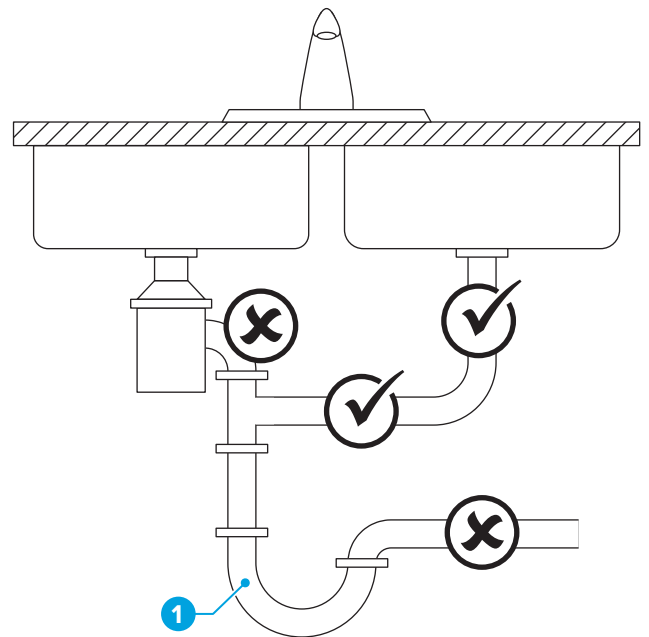


IMPORTANT: To remove tubing, ALWAYS press in gray collar on quick connector first to release. DO NOT attempt to remove tubing by pulling on it without first releasing it. This may damage tubing and cause leakage.

Install the Reverse Osmosis Drain Saddle

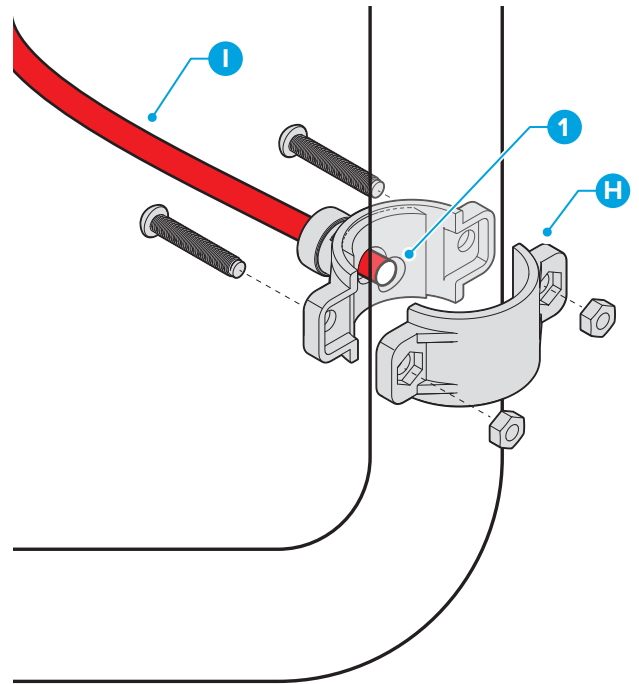
The RO filter assembly requires a drain line connection to be installed, which removes rejected water to the sewer. The drain saddle connects the drain line from the dispenser to your drain pipe. The drain saddle is designed to fit around a standard 1.5 in. OD (outer diameter) drain pipe.

- ✓ Always install the drain saddle above the P-trap (1). Ensure the drain saddle is in place on the vertical or horizontal section of the pipe.
- ✗ To avoid clogging the drain line with debris, do not install the drain saddle on a section of piping that is located after the drain pipe meets a garbage disposal or dishwasher drain.



To install the reverse osmosis (RO) drain saddle:

1. Determine the location for drain saddle (H). To guide drilling, make a mark on the pipe for the opening.
2. Using adjustable drill with 1/4" drill bit, drill hole at mark. Drill hole in one side of pipe ONLY.
3. Locate the half of the drain saddle with the hole in it. Remove the backing from the foam gasket. Align the adhesive side of it over the hole on the inside of the drain saddle. Press in place, ensuring a clean opening.
4. Position both halves of the drain saddle on the drain pipe with the saddle's opening aligned over the drilled hole (1). Insert your drill bit through the saddle and drilled hole to ensure proper alignment.
5. Secure both ends of the drain saddle together using the bolts and nuts, but do not overtighten.
6. Insert the red RO wastewater tube (I) approximately 0.6 in. into the quick connector of the drain saddle. Slide one of the small blue locking clips between the quick connector and white collar on the drain saddle to secure tube.



Install the Faucet

CAUTION: Risk of damage. Some kitchen countertop materials, including granite, porcelain, steel, and plastic resin require specialized tools and can be irreparably damaged if unsuitable tools are used.

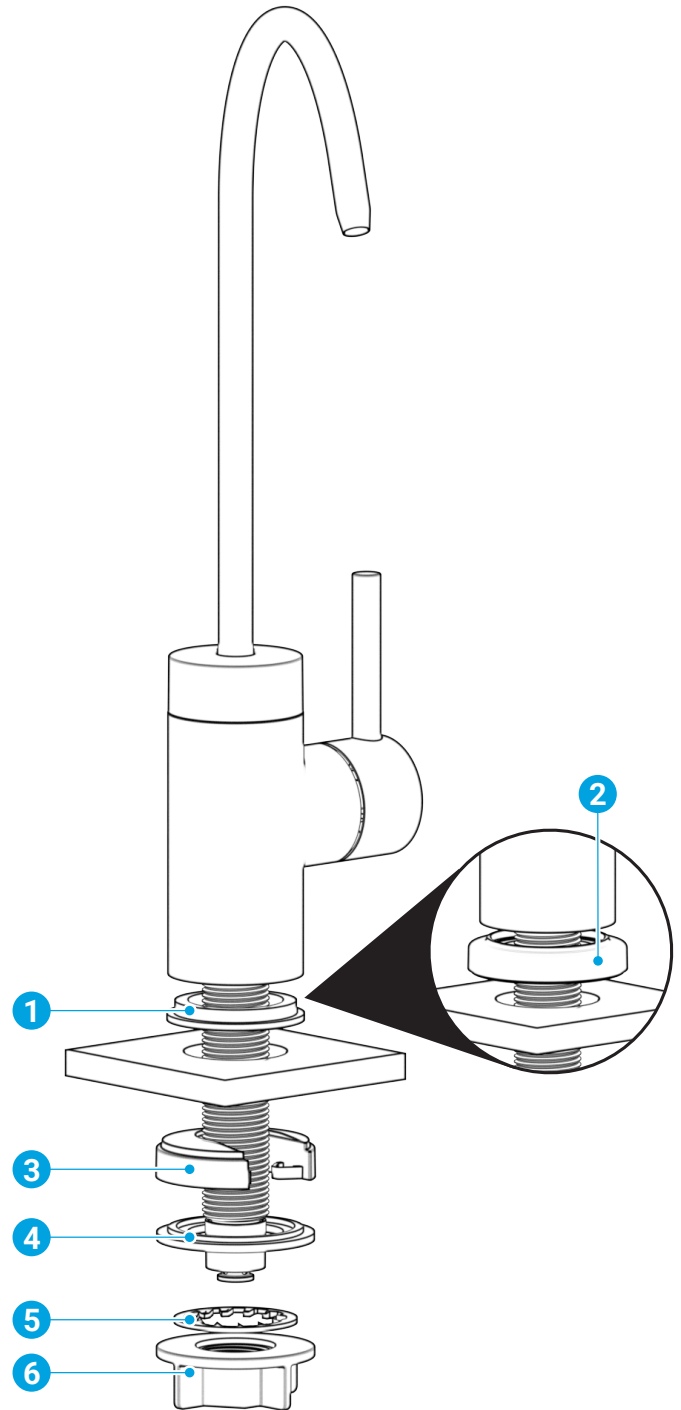
Installing the faucet requires a 1-inch diameter hole in the countertop or sink. If one does not exist and you are uncomfortable drilling a hole yourself, we strongly suggest hiring a professional to do it for you.

1. Insert the small rubber gasket (1) into the base of the faucet. Thread the faucet stem through the hole in the counter, ensuring faucet is fully seated on counter with gasket forming a seal.

NOTE: The installation package includes a faucet base (2). If countertop hole is larger than 1", position the base over the countertop hole and thread the faucet stem through that, ensuring faucet is fully seated on base. The small rubber gasket should not be used.

2. Under the sink, slide the horseshoe washer (3), smooth side up, up the stem so that it's positioned against the under side of the counter.
3. Slide the large rubber washer (4), ridge side up, up the stem, followed by the internal tooth washer (5).
4. Secure the fixing components against counter by twisting locking nut (6) up threaded stem. Be sure to check that the faucet is securely fixed to the counter.
5. Connect one end of the blue faucet tube tube to the quick-connect on the end of the faucet stem. Secure connection with a small locking clip.

NOTE: Do not connect the other end of the blue faucet tube to the filtration unit at this time.



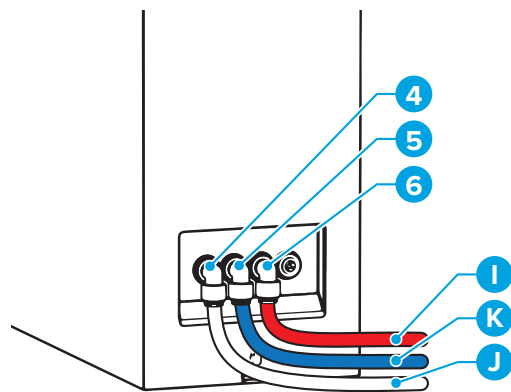
Complete the Installation

IMPORTANT: The filtration system has been fitted with safety plugs to ensure system ports are not damaged during shipping. Plugs **MUST BE** removed before connecting tubing. To remove plug, press in gray collar on port, then pull plug out. **DO NOT** attempt to remove plugs by pulling them out without first releasing them. This may severely damage ports and cause water leakage.

1. After safety plugs have been removed, insert one elbow connector (O) into each labeled port (Inlet, Outlet, Drain) with quick-connector opening facing down.

NOTE: The right-most port is non-functioning and should not be used.

2. Insert the free end of the white inlet tube (J) into the elbow connector of the inlet port (4).
3. Insert the free end of the blue faucet tube (K) into the elbow connector of the outlet port (5).
4. Insert the free end of the red RO wastewater drain tube (I) into the elbow connector of the drain port (6).
5. Secure tubes to elbow connectors with small blue locking clips. Secure elbow connectors to the filtration unit ports with large blue locking clips (M).



Operation

Start Up the Filtration System

1. Ensure all water connections are completed as described in the Installation section.
2. Connect the filtration system power cord plug to a working GFCI outlet. The filter indicator panel turns on.
3. Turn the cold water supply on.

NOTE: When the system is first turned on, it goes into automatic flushing mode, which lasts approximately 25 seconds.

4. Flush the filters. (See “Flushing the Filters” on page 13.) While system is flushing, make sure there are no leaks in the joints, fittings, valves, and tubing connections.

Start Water Purification

Turn on the faucet by rotating the lever forward. The water filtration system starts to produce water.

NOTE: If the faucet runs water for over 30 minutes, the filtration unit enters overtime protection mode. When this happens, the unit will beep, the filter indicator lights will flash, and the system will no longer produce water. Unplug the filtration unit from the outlet, and then plug it in again to clear the protection mode.

Shut Down

1. Turn off the water to the system.
2. Unplug the unit from the outlet.

Care and Maintenance

- Keep this device in a cool, dry place away from direct sunshine.
- Use a clean, soft cloth to remove dust build-up. Do not use soap, detergent, or harsh abrasives.
- If the filtration system is not going to be used for an extended period of time, turn off the water to the system, and unplug the unit from the outlet.
- Never lay the unit on its side or back. It should always be operated and stored in an upright position.
- If the cold water inlet temperature drops to <math><32\text{ }^{\circ}\text{F}</math> (<math><0\text{ }^{\circ}\text{C}</math>), there is a risk the tubes could crack and damaging leaking could occur. To prevent this, turn off the water to the system, then turn on the faucet and drain any remaining water out of the filtration system.

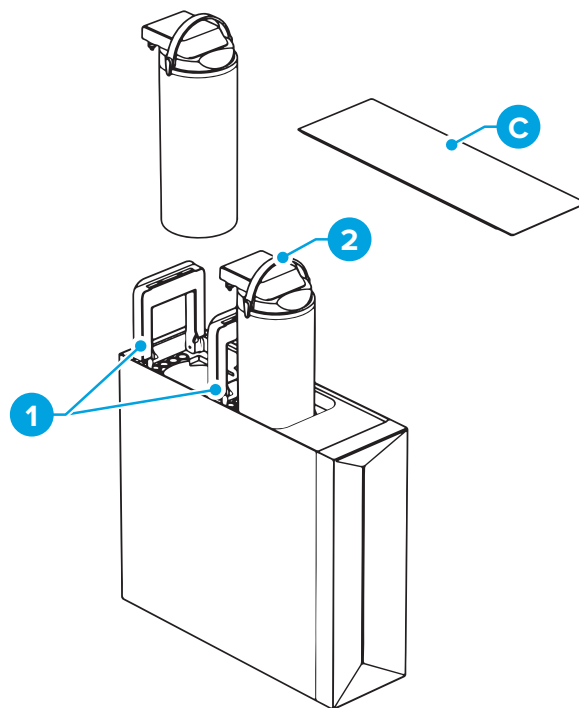
Filter Replacement Schedule

Filter Type	Model No.	Replacement Schedule	Function
PCB Composite Filter	RPFTR0E600PRMPC	3,600 liters or every 6 to 12 months	Removes mud, sand, rust, suspended solids, chlorine, and unpleasant tastes.
RO Filter	RPFTR0E600PRMRO	7,200 liters or every 12 to 24 months	Removes up to 99% of contaminants including arsenic, lead, fluoride, heavy metals, and more.

Replacing the Filters

When one or both of your filter indicator lights begin to flash, the filter(s) needs to be replaced. To change a filter:

1. Unplug the unit from the power source, then turn off the water to the system.
2. Carefully pry off filter compartment cover (C).
3. Flip up the bracket (1) of the expired filter, then grasp the expired filter by its handle (2) and pull up to remove.
4. Insert a new filter and firmly press down the bracket (1) to lock the filter into place.
5. Snap the filter compartment cover (C) back onto the unit.
6. Turn on the water supply back on, then plug the unit back into the power source.
7. Touch and hold the Reset button until the filter indicator light stops flashing (approximately 3 seconds).
8. Flush the new filter. (See “Flushing the Filters” on page 13.)



Flushing the Filters

Always flush new filters before using. Do not drink the water while flushing.

1. Turn on the faucet and allow water to run for 10 minutes.
2. Turn off the faucet and wait 30 minutes.
3. Turn on the faucet and allow water to run for another 10 minutes.
4. Flushing is complete, and system can now be used.

Troubleshooting

Problem	Probable Cause	Solution
The filters are generating a light noise during operation.	<ul style="list-style-type: none"> • The filters may generate a light noise during operation. 	<ul style="list-style-type: none"> • This is normal.
The water output volume has dropped.	<ul style="list-style-type: none"> • One or both of the filters need to be replaced or reinstalled. • Tubing is leaking. • Tubing is crimped. • The water temperature is low. • The water pressure is low. 	<ul style="list-style-type: none"> • Replace or reinstall one or both the filters. (See “Replacing the Filters” on page 12.) • Check system tubing to make sure it has been installed correctly and there are no leaks. • If a tube is being pinched, adjust it so water can flow efficiently. • Be sure the cold water temperature is between 39 °F and 100 °F (4 °C and 38 °C). • Check and confirm water pressure is between 15 and 100 PSI.
The water quality is poor.	<ul style="list-style-type: none"> • A filter needs to be replaced. • The filtration system has not been used in more than 3 days. • The quality of the source water is low. 	<ul style="list-style-type: none"> • Replace one or both filters. (See “Replacing the Filters” on page 12.) • Turn on the faucet and flush for 3–5 minutes. • Ensure your water source is municipal tap water.
A filter indicator light on the unit is flashing.	<ul style="list-style-type: none"> • The indicated filter has expired and needs to be replaced. 	<ul style="list-style-type: none"> • Replace filter. (See “Replacing the Filters” on page 12.)
Indicator lights are flashing, unit beeps, and no water can be dispensed.	<ul style="list-style-type: none"> • Water has been continuously dispensed for more than 30 minutes, and unit has entered overtime protection mode. 	<ul style="list-style-type: none"> • Clear overtime protection mode by closing faucet, unplugging the unit, then plugging it back in again.

Problem	Probable Cause	Solution
Indicator lights flash and unit beeps.	<ul style="list-style-type: none"> A component has failed or there is an internal leak. 	<ul style="list-style-type: none"> Immediately shut off the main water supply and unplug the unit from power source. Contact customer service for assistance.
There is no water output after replacing a filter.	<ul style="list-style-type: none"> There is an air jam. 	<ul style="list-style-type: none"> When replacing a filter, it is important to shut off the power followed by the water supply, and then turn on the water supply followed by the power supply in that order. (See “Replacing the Filters” on page 12.)

Warranty

Brio (“Vendor”) warrants to the original purchaser of the Brio Water Filtration System (the “Product”), and to no other person, that if the Product is assembled and operated in accordance with the printed instructions accompanying it, then for a period of one (1) year from the date of purchase, all parts in the Product shall be free from defects in material and workmanship. This Limited Warranty shall be limited to repair or replacement of parts, which prove defective under normal use and service and which Vendor shall determine in its reasonable discretion upon examination to be defective. To take advantage of this Limited Warranty, please follow these steps:

1. Please retain your sales slip or invoice, as Vendor may require reasonable proof of your date of purchase.
2. Contact Vendor’s Customer Service Department using the contact information listed below.
3. Return parts to Vendor, per Vendor’s instructions, at your cost and expense.
4. Upon receipt by Vendor, Vendor shall advise you in writing whether a defect covered by this Limited Warranty exists in any returned part and whether your claim has been approved or denied.
5. Upon Vendor’s approval of your claim, Vendor will replace such defective part without charge to you.

WHAT THIS LIMITED WARRANTY DOES NOT COVER: This Limited Warranty does not cover any failures or operating difficulties of the Product due to accident, abuse, misuse, alteration, misapplication, improper installation or improper maintenance or service by you or any third party, or failure to perform normal and routine maintenance on the Product, as set out in the User’s Manual. In addition, this Limited Warranty does not cover damages to the finish, such as scratches, dents, discoloration or rust after purchase.

This Limited Warranty is the only express warranty given on the Product and is in lieu of all other express warranties. Vendor disclaims all warranties for products that are purchased from seller other than authorized retailers or distributors. THIS LIMITED WARRANTY RESTRICTS THE DURATION OF ANY AND ALL IMPLIED WARRANTIES, INCLUDING WITHOUT LIMITATION, THE IMPLIED WARRANTY OF MERCHANTABILITY AND FITNESS FOR A PARTICULAR PURPOSE TO THE ONE (1) YEAR TERM OF THIS LIMITED WARRANTY. UPON THE EXPIRATION OF THE ONE (1) YEAR TERM OF THIS LIMITED WARRANTY, VENDOR DISCLAIMS ANY AND ALL IMPLIED WARRANTIES, INCLUDING WITHOUT LIMITATION THE IMPLIED WARRANTIES OF MERCHANTABILITY AND FITNESS FOR A PARTICULAR PURPOSE, THE PRODUCT BEING THUS SOLD AS-IS, WITH ALL FAULTS. FURTHER, VENDOR SHALL HAVE NO LIABILITY WHATSOEVER TO PURCHASER OR ANY THIRD PARTY FOR ANY SPECIAL, INDIRECT, PUNITIVE, INCIDENTAL, OR CONSEQUENTIAL DAMAGES. OTHER THAN THIS LIMITED WARRANTY, THERE ARE NO WARRANTIES WHICH EXTEND BEYOND THE DESCRIPTION ON THE FACE HEREOF. Vendor assumes no responsibility for any defects caused by third parties. This Limited Warranty gives you specific legal rights, and you may have other rights which vary from state to state. State law may also override statements in this Limited Warranty regarding the restriction on the duration of implied warranties. Some jurisdictions do not allow exclusion or limitation of special, incidental or consequential damages, or limitations on how long a warranty lasts, so the above exclusion and limitations may not apply to you.



WWW.BRIOWATER.COM

©2025 Brio Water Technology, Inc.