

Brio®



**Countertop
Water Dispenser**
Setup Manual

Model No.: CLCTPOU320UVF3P

Table of Contents

Safety Information	3
Intended Use	4
Product Features	4
Indicator Panel Description	5
Operational Specifications	5
Technical Specifications	5
Package Contents	5
Materials Needed	6
Installation	6
Determine Installation Location	6
Install the Dispenser	7
Flush the Filters	8
Install the Filters and Tubing	9
Connect to the Cold Water Supply	11
Complete the Installation	12
Operation	12
Turn the Dispenser On/Off	12
Dispense Cold Water	12
Disable the Child Safety Lock and Dispense Hot Water	13
Troubleshooting	13
Cleaning and Maintenance	14
Clean the Hot and Cold Tanks	14
Filter Replacement Schedule	15
Replace the Filters	15
Filter Specifications	16
Care and Maintenance	16
Warranty	17

Safety Information

WARNING: To reduce risk of injury and property damage, you must read this entire guide before assembling, installing and operating the dispenser.

WARNING: This product dispenses water at very high temperatures. Failure to use properly can cause personal injury. When operating this dispenser, always exercise basic safety precautions, including the following:

- Prior to use, this dispenser must be properly assembled and installed in accordance with this manual.
- For indoor use only. Keep the water dispenser in a dry place away from direct sunlight. Do NOT use outdoors.
- Install and use only on a hard, flat and level surface.
- Do NOT place the water dispenser in an enclosed space or cabinet.
- Do NOT operate the dispenser in the presence of explosive fumes.
- Use only properly grounded outlets.
- Do not use an extension cord.
- Always grasp the plug and pull straight out from the outlet. Never unplug by pulling on the power cord.
- Do NOT use the dispenser if the cord becomes frayed or otherwise damaged. If the supply cord is damaged, it must be replaced by the manufacturer, its service agent or similarly qualified persons in order to avoid a hazard.
- To protect against electric shock, do NOT immerse cord, plug, or any other part of the dispenser in water or other liquids.
- Ensure the water dispenser is unplugged prior to cleaning.
- Never allow children to dispense hot water without proper and direct supervision. Unplug the unit to prevent unsupervised use by children.
- Service should be performed only by a certified technician.
- The appliance must not be cleaned by a water jet and is not suitable for installation in an area where a water jet could be used.

WARNING: Keep ventilation openings, in the appliance enclosure or in the built-in structure, clear of obstruction.

WARNING: Do not use mechanical devices or other means to accelerate the defrosting process, other than those recommended by the manufacturer.

- This appliance should work under environment of temperatures from 39–104 °F (4–40 °C) and humidity ≤90%.
- Never turn the machine upside down or lean it more than 45°.
- After turning the dispenser off, allow the dispenser to sit idle for 3 minutes before turning on again.

WARNING: UV light source. Disconnect the electrical supply to UV radiation BEFORE opening cover.

- UV-LED lamp must be repaired by manufacturer only.
- UV-LED lamp model no. YB09-950-022, rated DC 24V, 0.17W±20%.
- Disposal of the UV-LED lamp must be done in accordance with local laws and regulations.

WARNING: Designed for use with 120V AC power only. DO NOT use with 220V outlet.

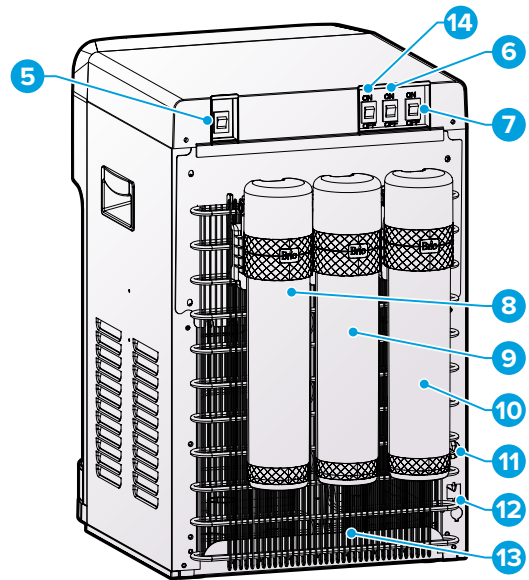
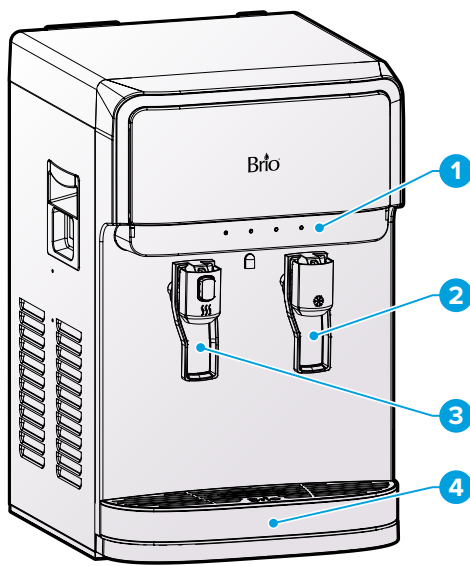
Intended Use

This dispenser is intended to be used in household and similar applications such as:

- Staff kitchen areas, offices and other working environments
- Farm houses
- Hotels, motels and other residential-type environments
- Bed-and-breakfast environments
- Catering and similar non-retail applications

This appliance is not intended for use by persons (including children) with reduced physical, sensory or mental capabilities, or lack of experience and knowledge, unless they have been given supervision or instruction concerning use of the appliance by a person responsible for their safety.

Product Features

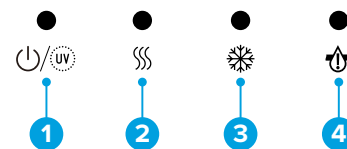


Part	Description
1	Indicator panel
2	Cold water tap
3	Hot water tap with child safety lock
4	Drip tray

Part	Description
8	Sediment filter
9	Pre carbon filter
10	Carbon block filter
11	Water inlet
12	Drain outlet
13	Condenser
14	Night light switch

Indicator Panel Description

1. Power/self-cleaning UV indicator light – When illuminated, indicates the dispenser is on. When blinking, indicates the self-cleaning UV process is on.
2. Hot water indicator light – When illuminated, indicates that the dispenser is heating water.
3. Cold water indicator light – When illuminated, indicates that the dispenser is cooling water.
4. Filter indicator light - When blinking indicates filters need to be replaced.



Operational Specifications

You must use the dispenser within the following operational parameters to ensure safe, optimal performance.

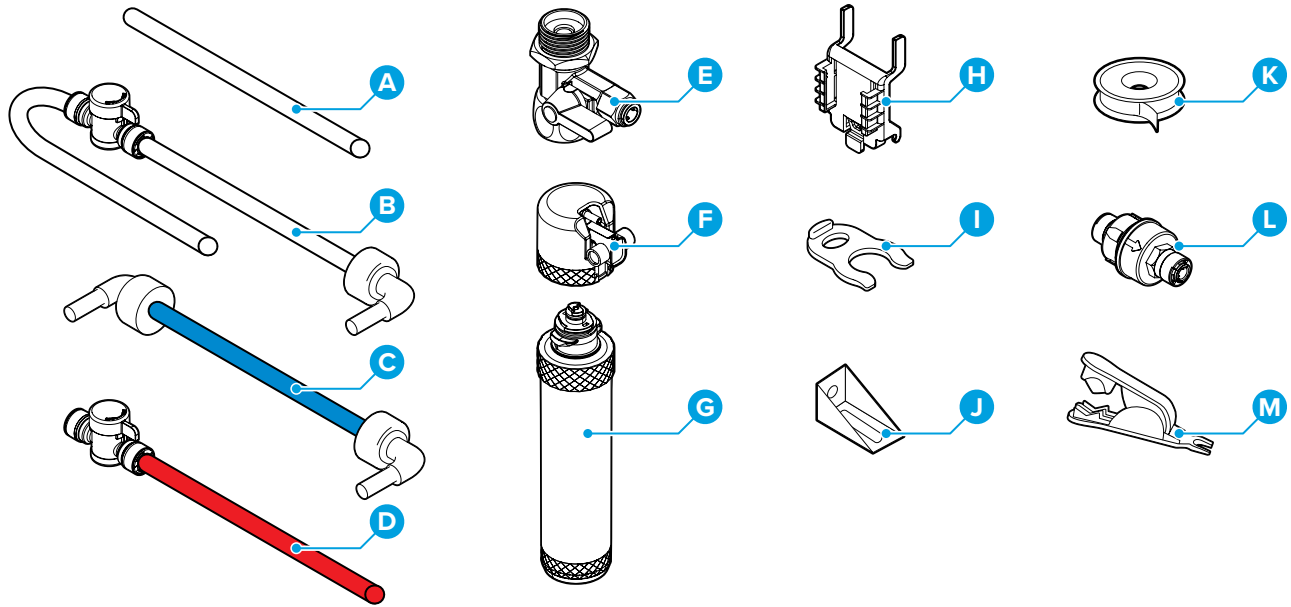
Model No.	CLCTPOU320UVF3P
Rated Voltage / Frequency	115 V / 60 Hz
Heating Power	420 W
Cooling Power	100 W
Operating Ambient Temperature	39–104 °F (4–40 °C)
Operating Humidity	≤90%
Operating Source Water	Municipal water with TDS ≤250 ppm
Operating Source Water Temperature	39–100 °F (4–38 °C)
Operating Water Pressure	14.5–58 psi (0.1– 0.4 MPa)

Technical Specifications

CAUTION: This unit dispenses water at temperatures that can cause severe burns. Avoid direct contact with hot water. Keep children and pets away from unit while dispensing. Never allow children to dispense hot water without proper supervision. Unplug unit to prevent unsupervised use by children.

Model No.	CLCTPOU320UVF3P
Hot Water Tank Volume	1 L
Cold Water Tank Volume	3 L
Hot Water Capacity (Measured at Ambient Temperature of 77 °F / 25 °C)	4 L/h (≥185 °F / 85 °C)
Cold Water Capacity (Measured at Ambient Temperature of 77 °F / 25 °C)	2.5 L/h (≤50 °F / 10 °C)
Hot Water Flow Rate	≥1.2 L/min
Cold Water Flow Rate	≥1.2 L/min
Net Weight	30.86 lb. (14 kg)
Product Dimensions (WxHxD)	12.2 x 19.17 x 18.34 in. (31 x 48.7 x 46.6 cm)
Dispense Point to Drip Tray (H)	8.46 in. (21.5 cm)
Drip Tray Area (WxD)	12.12 x 3.3 in. (30.8 x 8.4 cm)
UV Lamp Service Life	3 years or 10,000 hours
Noise (dBA)	≤49 dB

Package Contents



Part	Description	Quantity
A	Filter connecting tube	2
B	Shut off valve tube (7 ft.)	1
C	Elbow joint tube	1
D	Filter flushing tube (4 ft.)	1
E	Feed water adapter (with extra nut)	1
F	Filter housing	3
G	Filter (sediment, pre carbon, carbon block)	3

Part	Description	Quantity
H	Mounting bracket	3
I	Filter clip	10
J	Grounding bracket	1
K	Plumber's tape	1
L	Pressure-reducing valve	1
M	Tubing cutter	1

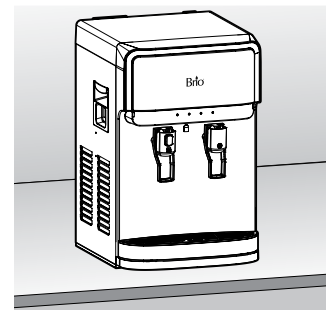
Installation

Materials Needed

- Screwdriver
- Wrench

1. Determine Installation Location

- Locate the dispenser upright on a hard, level surface that is out of direct sunlight and near a grounded wall outlet.
- Position the back of the dispenser no closer than 8 in. (20 cm) from wall to permit free airflow between the wall and water dispenser.

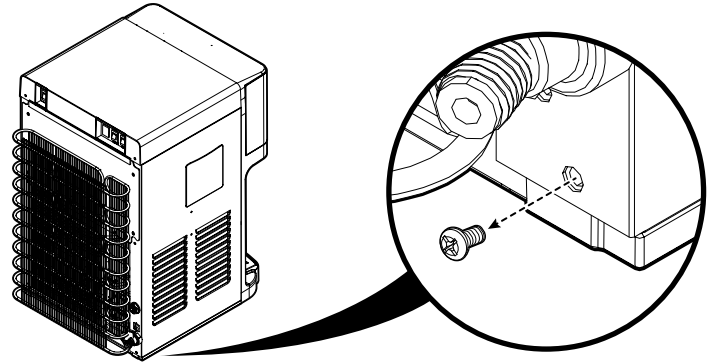


IMPORTANT: Ensure the dispenser stands upright for 24 hours BEFORE plugging in to allow oil to settle back in compressor. Failure to do so may damage compressor and void warranty.

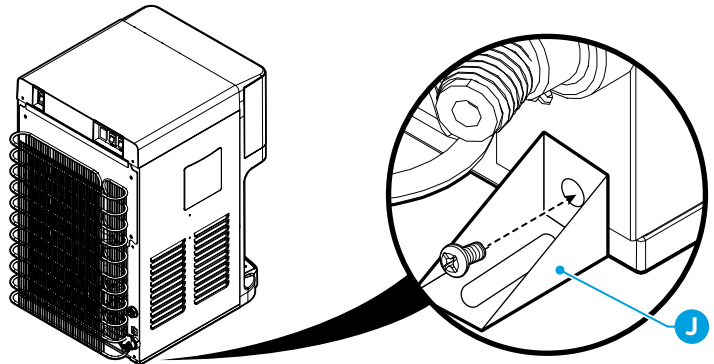
2. Install the Dispenser

WARNING: To avoid a hazard due to instability of the appliance, it must be secured in place in accordance with the instructions.

- A. Loosen and remove the screw on the bottom left or right of the dispenser.

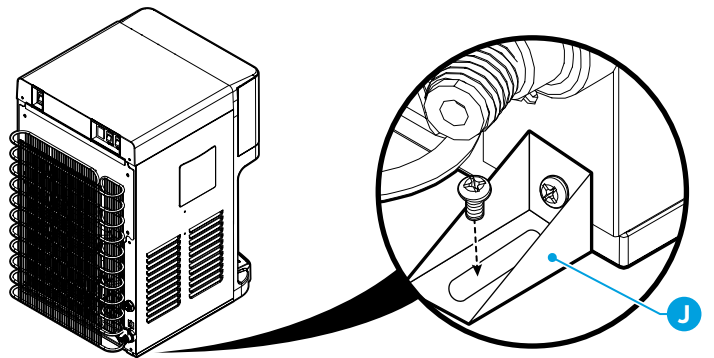


- B. Use this screw to attach the grounding bracket (J) on the left or right bottom corner of the water dispenser.



- C. Make a hole on the surface where the water dispenser will be installed.

- D. Attach the grounding bracket (J) on the surface by screwing tightly.

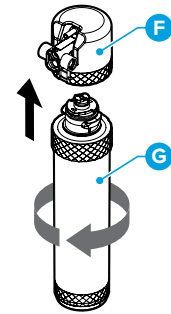


3. Flush the Filters

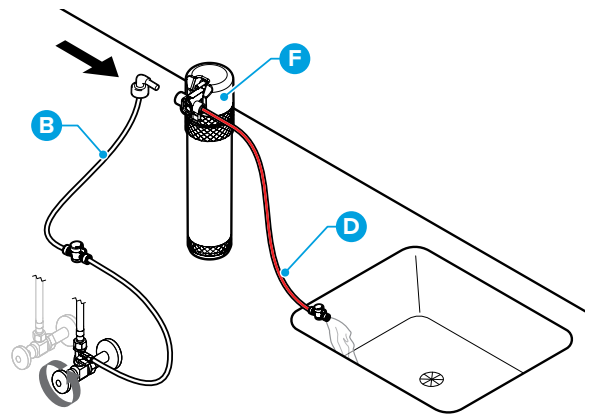
IMPORTANT: Follow this procedure every time you replace your filters.

IMPORTANT: Ensure the water supply is off before you begin.

- A. Connect a filter (G) to the filter housing (F) by twisting the filter (G) clockwise.

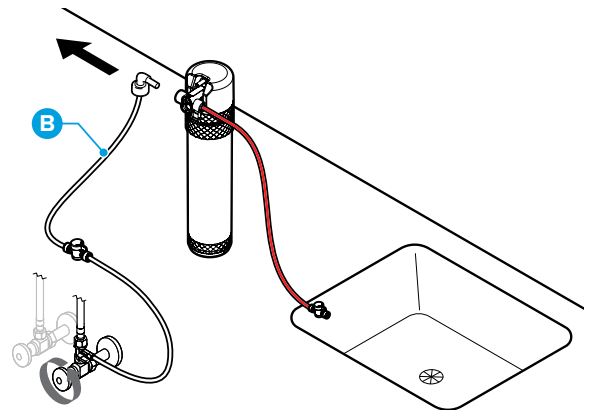


- B. Connect the tip of the shut-off valve tube (B) to the left side of the filter housing (F).
- C. Connect the filter flushing tube (D) to the right side of the filter housing (F) and lay the open end of the filter flushing tube (D) over a sink or receptacle to collect water.



- D. Turn on cold water supply and follow instructions in table below to flush filters.

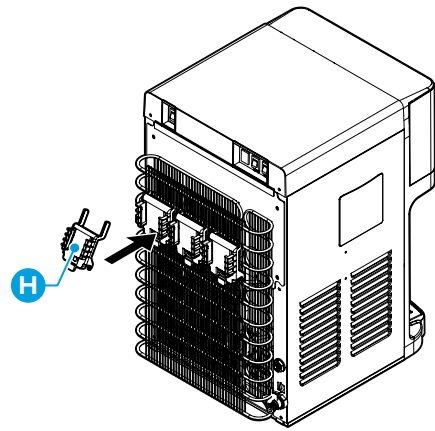
IMPORTANT: After each filter is flushed, be sure to shut off water supply before disconnecting tubes to flush the next filter.



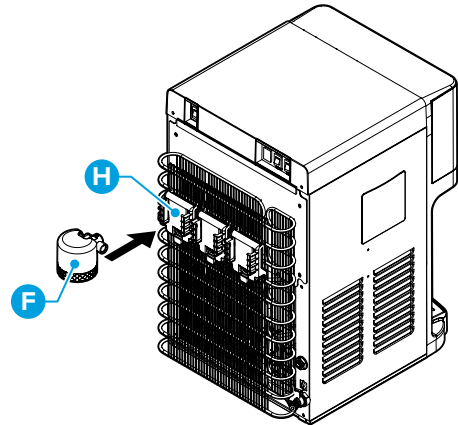
Stage 1: Sediment Filter	Stage 2: Pre Carbon Filter	Stage 3: Carbon Block Filter
At first, water may appear cloudy.	At first, water may contain black debris.	At first, water may contain black debris.
Flush filter for an additional 4 minutes <u>after</u> water runs clear.	Flush filter for up to 6 minutes or until water runs clear.	Flush filter for up to 4 minutes or until water runs clear.

3. Install the Filters and Tubing

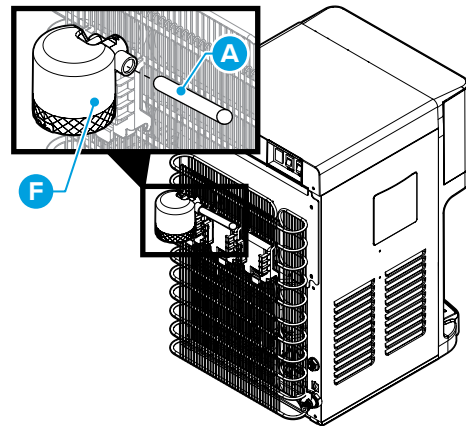
- A. Click the three black mounting brackets (H) onto the top of the condenser.



- B. Attach one filter housing (F) to the top of a mounting bracket (H).

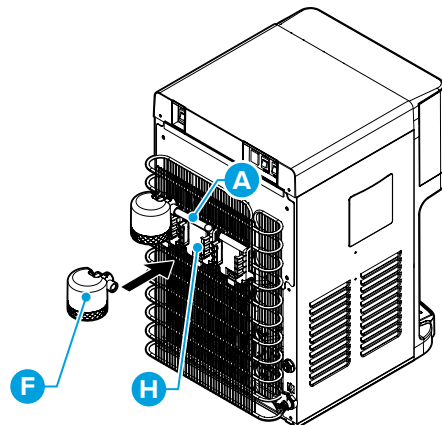


- C. Connect the filter connecting tube (A) to the filter housing (F).

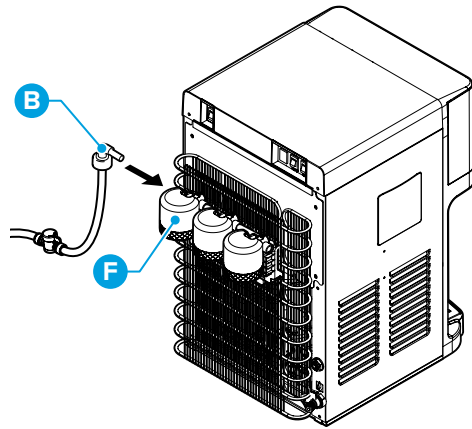


- D. Slide the next filter housing (F) onto the middle mounting bracket (H) and connect the other end of the filter connecting tube (A).

- E. Repeat for the third filter housing.

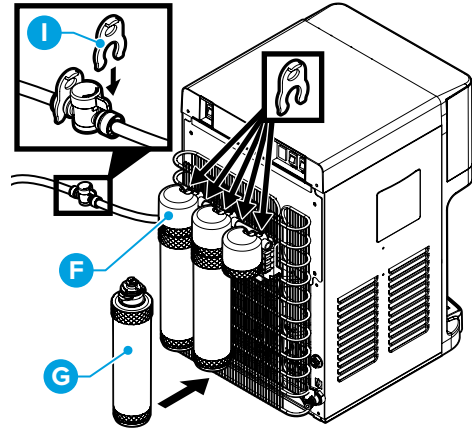


- F. Connect the shut off valve with tube (B) to the left filter housing (F).



- G. Connect the filters (G) into the filter housings (F). The sediment filter goes on the left, the pre carbon filter in the middle, and the carbon block filter on the right.

- H. Add filter clips (I) to each connection where indicated.



4. Connect to the Cold Water Supply

CAUTION: DO NOT CONNECT THIS WATER LINE TO A HOT WATER SUPPLY LINE. The water supply to the unit MUST be from the COLD WATER LINE. Using HOT WATER will severely damage your filters.

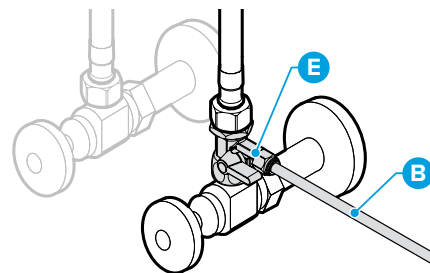
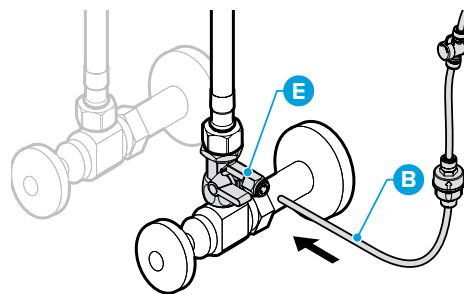
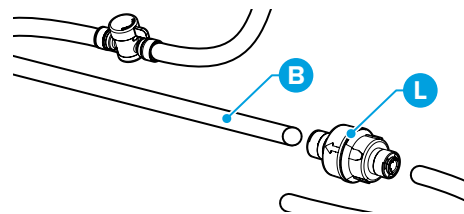
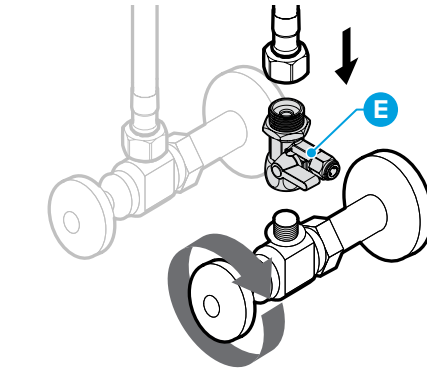
NOTE: Plumber's tape has been included to facilitate installation. Use it on threaded plumbing connections to ensure a secure seal.

- A. Turn off and then disconnect the current cold water supply line.
- B. Connect the feed water adapter (E) to the cold water supply line.
- C. Connect the cold water supply line on top of the feed water adapter (E).

NOTE: An extra adapter nut is included on top of the feed water adapter (E) to attach to a 3/8 in. or 1/2 in. feed plumbing line.

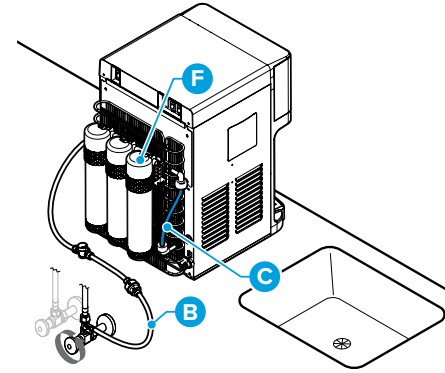
- D. Cut the shut off valve with tube (B) where indicated using the tubing cutter (M).
- E. Connect the two cut ends of the tubing straight into each end of the pressure-reducing valve (L). Ensure that the arrow will be pointing towards the flow of water into the dispenser when the shut off valve with tube (B) is connected in the next steps.
- F. Insert the shut off valve with tube (B) straight into the quick connector piece of the feed water adapter (E).

- G. Gently tug on the tube (B) to ensure a secure connection with the feed water adapter (E).



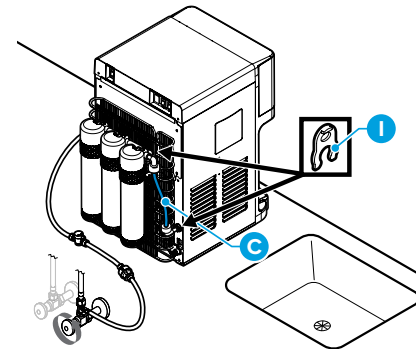
5. Complete the Installation

A. Connect the blue elbow joint tube (C) to the right filter housing (F) and to the water inlet hole on the back of the dispenser.



B. Place locking clips (I) at the two connecting ends of the elbow joint tube (C).

C. Turn on the water supply.



Operation

IMPORTANT: This unit has been tested and sanitized prior to packing and shipping. During transit, dust and odors can accumulate in the tank and lines. Dispense and dispose at least one quart of water prior to drinking any water.

Turn the Dispenser On/Off

IMPORTANT: Before you activate the heating and cooling switches, ensure water has filled the tanks inside the dispenser in order to prevent dry heating.

1. Plug in the dispenser.
2. Run water through the cold and hot water taps until water begins to dispense.
3. To power on the cooling system, flip the cooling switch to the On position.
4. To power on the heating system, flip the heating switch to the On position.

Dispense Cold Water

NOTE: Water will take approximately 1 hour after plugging in and turning on to become completely chilled. The cooling light will turn off once the water has been fully chilled.

1. Press a drinking glass or container against the cold water tap to dispense cold water.
2. Release when your container is full.

Disable Child Safety Lock and Dispense Hot Water

CAUTION: This unit dispenses water at temperatures that can cause severe burns. Avoid direct contact with hot water. Keep children and pets away from the unit while dispensing. Never allow children to dispense hot water without proper and direct supervision. Disable the heating feature by switching the heating convenience switch to the Off position.

NOTE: Water will take approximately 15-20 minutes after plugging in and turning on to reach its hottest temperature. The heating light will turn off once the water has been fully heated.

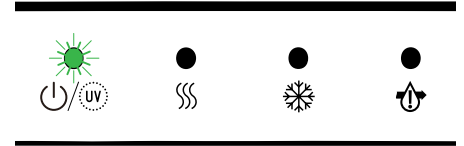
1. This water dispenser is equipped with a child safety feature in order to prevent inadvertent dispensing. To enable dispensing of hot water, press and hold the red lock button and then press your mug or container against the paddle directly beneath the red lock button.
2. Release the tap once your container is full. Hot water will automatically relock.

Troubleshooting

Problem	Solution
The cold water is not cold.	<ul style="list-style-type: none">• It takes up to one hour after setup to dispense cold water.• Make sure the power cord is properly connected to a working outlet.• Make sure the back of the dispenser is at least 8 in. (20 cm) from a wall and there is free airflow on all 8 in. (20 cm) sides of the dispenser.• Make sure green power switch on back of dispenser is On.
The hot water is not hot.	<ul style="list-style-type: none">• It takes 15-20 minutes after setup to dispense hot water.• Make sure the power cord is properly connected to a working outlet.• Make sure red power switch on back of dispenser is On.
The night light is not working.	<ul style="list-style-type: none">• Make sure the power cord is properly connected to a working outlet.• Make sure the night light power switch on the back of the dispenser is On.
The dispenser is noisy.	<ul style="list-style-type: none">• Ensure the dispenser is located on a level surface.• The heating tube may be generating a slight noise. This is normal.
The machine is not dispensing water.	<ul style="list-style-type: none">• The dispenser has become too cold and the lines are blocked by ice. Turn the cooling switch off for at least 4 hours to allow the water in the lines to thaw.
Power/UV and hot water indicator lights are flashing.	<ul style="list-style-type: none">• There is a hot water NTC failure caused by an open circuit or short circuit. Power off dispenser. Replace hot water NTC.
Power/UV and cold water indicator lights are flashing.	<ul style="list-style-type: none">• There is a cold water NTC failure caused by an open circuit or short circuit. Power off dispenser. Replace cold water NTC.
All indicator lights are flashing.	<ul style="list-style-type: none">• A water leak has been detected. Immediately turn off water to dispenser and unplug. Contact a certified repair professional for assistance.

Cleaning and Maintenance

IMPORTANT: This water cooler is equipped with UVC LED “UV-Care” Technology. It’s important to note that the UV-Care feature in this water cooler is specifically designed for sanitizing the cold tank, not for purifying the water. This system features a UV LED light above the cold tank, which activates for 120 minutes and then turns off for 140 minutes, which keeps the tank clean and sanitized. An indicator light on the cooler blinks when the UV light is active, allowing you to easily see when it’s on or off. The LED technology requires minimal maintenance and is built to last, with a lifespan of about 3 years due to its intermittent operation. This automatic on/off cycle prevents constant use and significantly extends the LED light’s life.



Clean the Hot and Cold Tanks

CAUTION: Before cleaning or performing any maintenance, ALWAYS turn off heating and cooling switches, unplug cooler, and turn off water supply.

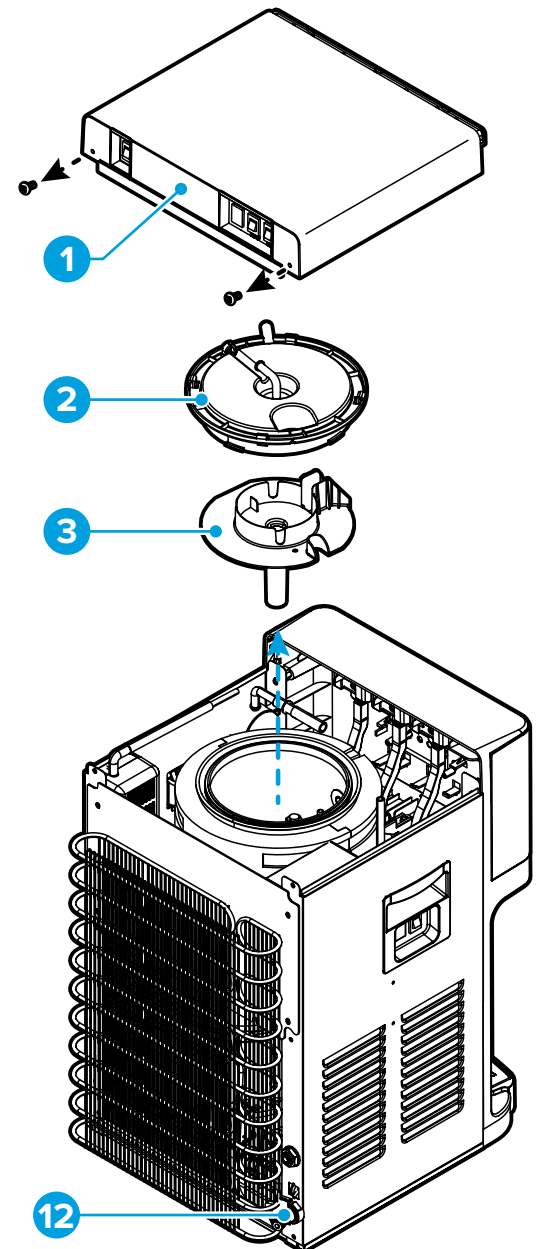
The water tanks should be cleaned every 3 to 4 months to remove mineral buildup and optimize dispenser performance.

NOTE: You do not need to remove filters and shut-off valve tube to clean tanks. They have been removed from line drawings for clarity only.

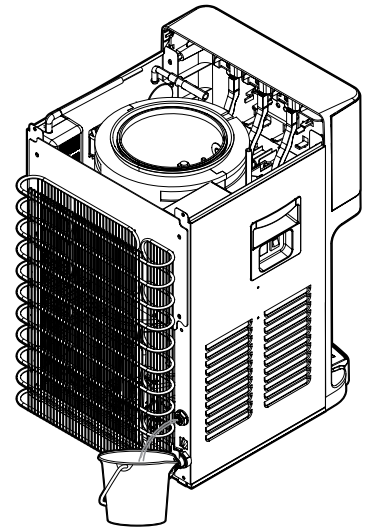
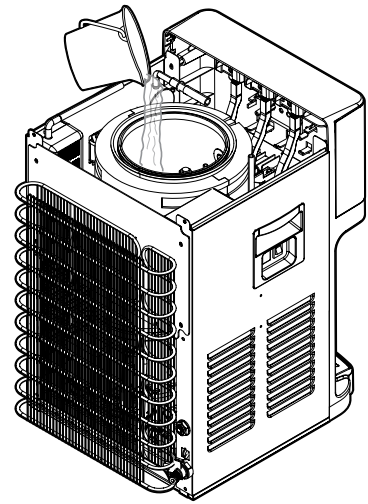
Gather the following supplies:

- 100g citric acid crystals
- 2.5 quarts hot water
- Large bucket or container
- Small container or cup
- Screwdriver
- Clean towels or cloths

1. Remove the cover from the drain outlet (12) on the back of the cooler. Position the bucket or large container under the outlet to catch water. Pull the drain plug out and allow the tanks to drain completely. Close the drain plug but don’t reinstall the drain cover yet. Dispose of water.
2. Remove the screws securing the top cover (1) and set aside in a safe place. Remove the top cover. Allow it to drape down the back of the cooler. Remove the cold water tank cover (2) and set aside. Remove the separator (3) at the bottom of the reservoir. Rinse the separator off and wipe clean with a clean towel or cloth. Set separator aside.



3. Press the small container against the dispense paddles, one at a time, to remove any remaining water from tanks.
4. Mix the citric acid crystals and the 2.5 quarts of hot in the bucket. Stir until completely dissolved. Pour this solution into the center of the cold water tank. The cleaning solution will trickle down and fill the hot water tank first. Pour in the remaining solution to fill up the cold water tank.
5. Reinstall the cold water tank cover, followed by the cooler cover. Don't reinstall screws yet.
6. Plug the cooler in and turn on the heating switch. Allow solution to sit in tanks for 30 minutes.
7. Turn off heating switch, then unplug cooler. Allow solution to sit in tanks for 10 to 15 minutes to cool.
8. To clean dispense spouts, dispense cleaning solution from spouts into small container or cup. To drain the remaining cleaning solution, place the bucket under the drain outlet on the back of the cooler. Pull the drain plug out and drain the solution. Push the drain plug back in. Fill the bucket with 2.5 quarts of fresh water and pour into the tanks to flush clean. Dispense a little fresh water from hot and cold spouts, then drain remaining rinse water from back of cooler.
9. Close drain outlet plug and reinstall drain cover. Reinstall separator, cold water tank cover, and cooler cover.
10. Turn water supply to cooler back on. Plug in cooler. Allow tanks to fill before turning on heating and cooling switches.



Filter Replacement Schedule

Filter Type	Model No.	Replacement Schedule	Function
Sediment	NFMPP5M	6-12 months or 3,600 liters	Performs coarse filtration of inlet water, removing sand, rust, dirt, and other suspended solids.
Pre Carbon	NFMGAC	6-12 months or 3,600 liters	Removes chlorine, and other unpleasant tastes and odors.
Carbon Block	NFMCTO5MS3	6-12 months or 3,600 liters	Performs final polish, removing any residual impurities.

Replace the Filters

IMPORTANT: Only replace the filters with new filters designed for this dispenser. Any other type of filter will damage the machine and void any warranty.

When a filter is approaching the end of its life, the red indicator light starts to blink. When the filter has reached the end of its life, the indicator light remains red. To change filters:

1. Shut off the water supply.
2. Remove expired filters.
3. Flush the new filters according to instructions under “Flush the Filters.” Install new, flushed filters. Ensure sediment is on the left, pre carbon is in the middle, and carbon block is on the right.
4. Press the filter reset switch until the red indicator light turns off.

Filter Specifications

Sediment Filter

(Sediment, Dirt, and Rust Removal)

Filter Capacity	3,600 Liters
Flow Rate	3 LPM
Suggested PSI	14.5 - 58 psi
Temperature	33 - 100 °F

Pre Carbon Filter

(Chlorine, Taste and Odor Reduction)

Filter Capacity	3,600 Liters
Flow Rate	3 LPM
Suggested PSI	14.5 - 58 psi
Temperature	33 - 100 °F

Carbon Block Filter

(Taste and Impurity Removal)

Filter Capacity	3,600 Liters
Flow Rate	3 LPM
Suggested PSI	14.5 - 58 psi
Temperature	33 - 100 °F

Care and Maintenance

- Keep this dispenser in a dry and cool place and avoid direct sunshine.
- Ensure the back of the dispenser is at least 8 in. (20 cm) away from the wall.
- Never put the dispenser on paper or foam, which may store water and then cause creepage. Never put anything flammable beside this machine.
- Do not use the dispenser outdoors or in a place that can be splashed by water.
- If the dispenser is not in use for longer than a 24-hour period, heating and cooling switches to save power, and drain any remaining water.
- If the water supply is cut off, shut off the water supply and turn the dispenser off. When the water supply is back on, re-open the water supply to the dispenser, turn the dispenser on, and allow the dispenser to run in order to discharge sediment.

Warranty

Brio (“Vendor”) warrants to the original purchaser of the Brio Water Coolers (the “Product”), and to no other person, that if the Product is assembled and operated in accordance with the printed instructions accompanying it, then for a period of one (1) year from the date of purchase, all parts in the Product shall be free from defects in material and workmanship. This Limited Warranty shall be limited to repair or replacement of parts, which prove defective under normal use and service and which Vendor shall determine in its reasonable discretion upon examination to be defective. To take advantage of this Limited Warranty, please follow these steps:

1. Please retain your sales slip or invoice, as Vendor may require reasonable proof of your date of purchase.
2. Contact Vendor’s Customer Service Department using the contact information listed below.
3. Return parts to Vendor, per Vendor’s instructions, at your cost and expense.
4. Upon receipt by Vendor, Vendor shall advise you in writing whether a defect covered by this Limited Warranty exists in any returned part and whether your claim has been approved or denied.
5. Upon Vendor’s approval of your claim, Vendor will replace such defective part without charge to you.

WHAT THIS LIMITED WARRANTY DOES NOT COVER: This Limited Warranty does not cover any failures or operating difficulties of the Product due to accident, abuse, misuse, alteration, misapplication, improper installation or improper maintenance or service by you or any third party, or failure to perform normal and routine maintenance on the Product, as set out in the User’s Manual. In addition, this Limited Warranty does not cover damages to the finish, such as scratches, dents, discoloration or rust after purchase.

This Limited Warranty is the only express warranty given on the Product and is in lieu of all other express warranties. Vendor disclaims all warranties for products that are purchased from seller other than authorized retailers or distributors. THIS LIMITED WARRANTY RESTRICTS THE DURATION OF ANY AND ALL IMPLIED WARRANTIES, INCLUDING WITHOUT LIMITATION, THE IMPLIED WARRANTY OF MERCHANTABILITY AND FITNESS FOR A PARTICULAR PURPOSE TO THE ONE (1) YEAR TERM OF THIS LIMITED WARRANTY. UPON THE EXPIRATION OF THE ONE (1) YEAR TERM OF THIS LIMITED WARRANTY, VENDOR DISCLAIMS ANY AND ALL IMPLIED WARRANTIES, INCLUDING WITHOUT LIMITATION THE IMPLIED WARRANTIES OF MERCHANTABILITY AND FITNESS FOR A PARTICULAR PURPOSE, THE PRODUCT BEING THUS SOLD AS-IS, WITH ALL FAULTS. FURTHER, VENDOR SHALL HAVE NO LIABILITY WHATSOEVER TO PURCHASER OR ANY THIRD PARTY FOR ANY SPECIAL, INDIRECT, PUNITIVE, INCIDENTAL, OR CONSEQUENTIAL DAMAGES. OTHER THAN THIS LIMITED WARRANTY, THERE ARE NO WARRANTIES WHICH EXTEND BEYOND THE DESCRIPTION ON THE FACE HEREOF. Vendor assumes no responsibility for any defects caused by third parties. This Limited Warranty gives you specific legal rights, and you may have other rights which vary from state to state. State law may also override statements in this Limited Warranty regarding the restriction on the duration of implied warranties. Some jurisdictions do not allow exclusion or limitation of special, incidental or consequential damages, or limitations on how long a warranty lasts, so the above exclusion and limitations may not apply to you.



WWW.BRIOWATER.COM

©2024 Brio Water Technology, Inc.